

**AKSA Power Generation** has been producing industrial generator sets with an innovative compact design and excellence in quality for over 30 years. AKSA has been providing reliable power through three main production plants and over 15 branch offices worldwide.



**General Characteristics**

Model Name	<b>APD575C-6</b>	Frequency / PF	<b>60Hz, 1800 rpm, 0.8pf</b>
Engine Make & Model	<b>Cummins KTA19G3</b>	Alternator Make	<b>Stamford</b>
Control Panel Model	<b>DSE 7320</b>	Base Frame / Enclosure	<b>AKSA MS80 / MS85</b>

**Genset Rating – 60Hz, 1800rpm, 0.8pf**

Engine	Alternator	Voltage	Standby Power	Prime Power	Standby Current
KTA19G3	HCI544C (Wnd-311)	480 / 277V	575kVA	520kVA	692A
	HCI544D (Wnd-14)	380 / 222V	575kVA	520kVA	874A
	HCI544C (Wnd-311)	220 / 127V	575kVA	520kVA	1509A
	HCI544C (Wnd-311)	208 / 120V	569kVA	520kVA	1579A

Stand-by Power (Maximum): Power available at variable load in the event of main power network failure. No over load is permitted.  
 Prime Power: Power available at variable load in lieu of a main power network. Overload of 10% is permitted for 1 hour in every 12 hours of operation.  
 The above ratings represent the engine performance capabilities to conditions specified in accordance with ISO 8528/5 & ISO3046.  
**Derating may be required for conditions outside of the test conditions.**

**Codes & Standards**

The Generator set is designed and manufactured in a facility certified to **ISO9001** standards.

The Generator set is designed and manufactured in a facility certified to **ISO14001:2015** standards.

**AKSA Power Generation** provides **single source responsibility** for the generator set & accessories.

The generator set, with its components, are **prototype tested** and **production tested**



\*Manufacturer reserves the right to make changes in model, technical specifications, color, equipment and accessories without prior notice.



## Engine Data

Manufacturer	Cummins
Model	KTA19G3
Displacement & Cylinders	19L / 6 Cylinders
Engine Speed	1800rpm
Engine Standby Power	511 kW / 685 HP
Engine Prime Power	463 kW / 620 HP
Aspiration	Turbocharged, Aftercooled
Compression Ratio	13.9 : 1
Bore / Stroke	159 mm / 159 mm
BMEP	1795 Kpa
Piston Speed	9.5 m/s
Friction Horsepower	62 Kw
Engine Water Flow	196 L/s
Intake Air Flow	647 litre/sec.
Exhaust Gas Flow	1713 litre/sec.
Exhaust Gas Temperature	491 °C

## Electric System

Engine Cranking Motor	24V
Engine Battery Charge System	35A, Negative Ground
Battery Qty, Rating, CCA	2 x 120Ah

## Cooling System

Coolant Capacity	99 L
Max Coolant Friction Head External to Engine -1500rpm	68.9 kPa
Thermostat Range	82 – 94 °C
Max Allowable Coolant Temp	96.1 °C
Max Top Tank Temperature	104 °C

## Exhaust System

Max Back Pressure	10.2 kPa
Standard Exhaust Pipe Size	127 mm
Manifold Insulation	Not Acceptable
Turbocharger Insulation	Not Acceptable

## Fuel System

Type of Injection	Cummins PT
Max Restriction to Fuel Pump	13.55 kPa (Clean Filter) 30.48 kPa (Dirty Filter)
Max Fuel Pump Supply	NA
Minimum Allowable Fuel Tank Vent Capability	425 L/h

## Air Intake System

Max Intake Air Restriction	3.73 kPa (Clean Element)
Min Dirt Holding Capacity	53 g/L/s
Intake Air Alarm Temp	82 °C

## Fuel Consumption

Standby Power (110%)	122 L/h
Prime Power (100%)	111 L/h
Prime Power (75%)	86 L/h
Prime Power (50%)	61 L/h
Prime Power (25%)	37 L/h

## Lubrication System

Max Oil Temperature	121 °C
Oil Capacity	37.9 L
Oil Pressure	345 – 483 kPa
Total System Capacity	84.4 L

\*Manufacturer reserves the right to make changes in model, technical specifications, color, equipment and accessories without prior notice.



**Alternator Data**

Manufacturer	Stamford
Standards	BS EN 60034
Control System	Self Excited
A.V.R.	AS440
Voltage Regulation	± 1 %
Insulation System	Class H
Protection	IP23
Rated Power Factor	0.8
Stator Winding	Double Layer Concentric
Winding Pitch	Two Thirds
Winding Leads	12
Telephone Interference	THF < 2 %
Waveform Distortion	No Load < 1.5 %
Maximum Over speed	2250 rev/min

**Controller Data**

Manufacturer	DSE
Model	7320
Type	Auto Mains Failure Control

**Controller Features & Benefits**

- Microprocessor controlled
- License free PC Software
- IP65 rating offers increased resistance to water ingress
- Modules can be integrated to building management systems
- Real time clock provides accurate event log
- Four line back-lit LCD text display
- Five key menu navigation
- Front panel editing with PIN protection
- Support up to three remote display modules
- Configurable timers and alarms
- Multiple date and timer scheduler

**Battery Charger & Electrical System Data**

Manufacturer	AKSA
Model	SmartGen BAC06A
Input Voltage	100V ~ 250V AC
Output Voltage / Current	27,6V DC / 3A

- Integral PLC editor
- 'Protections disabled' feature
- kW & kVAr protection
- Reverse power (kW & kVAr) protection
- Power monitoring (kWh, kVAr, kVAh, kVArh)

**Jacket Water Heater Data**

Manufacturer	AKSA
Model	HTR4000W 100-120F
Input Voltage	Based on Genset Voltage
Power	4000W

- Load switching (load shedding and dummy load outputs)
- Unbalanced load protection
- Independent Earth Fault trip
- Fully configurable via DSE Configuration Suite PC Software
- SCADA monitoring via DSE Configuration Suite PC Software

\*Manufacturer reserves the right to make changes in model, technical specifications, color, equipment and accessories without prior notice.

**Enclosure Features**

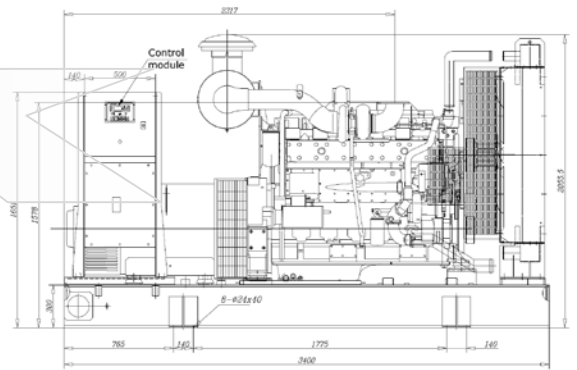
- ✓ Heavy Duty Steel Structure
- ✓ E-Stop on Enclosure
- ✓ Control Panel Eliminated from Engine Vibrations
- ✓ Control Panel Window
- ✓ Plastic Covered Corrosion Resistant Locks & Hinges

**Enclosure Features**

- ✓ Internally Mounted Exhaust System with Rain Cap
- ✓ Coolant Fill Cap
- ✓ Top Lifting Feature
- ✓ Base Fuel Tank
- ✓ Easy Access for Maintenance

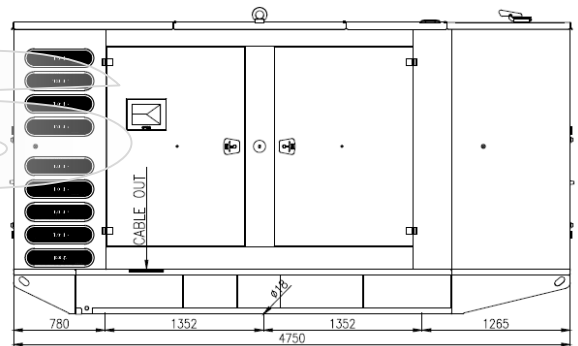
**Open Skid Gen-Set Dimensions**

Length	3400 mm
Width	16800 mm
Height	2056 mm
Dry Weight	4050 kg
Tank Capacity	850 L



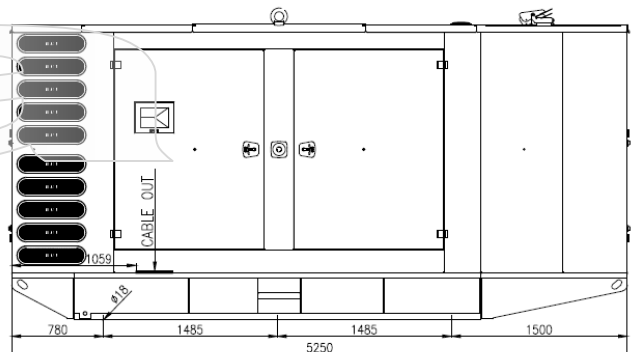
**Enclosed Gen-Set Dimensions @480&380V Conf.**

Length	4750 mm
Width	1606 mm
Height	2615 mm
Dry Weight	5165 kg
Tank Capacity	850 L
Sound Pressure @ 7 meters	79 dB(A)



**Enclosed Gen-Set Dimensions @208&220V Conf.**

Length	5250 mm
Width	1605 mm
Height	2656 mm
Dry Weight	6200 kg
Tank Capacity	1000 L
Sound Pressure @ 7 meters	TBD



\*Manufacturer reserves the right to make changes in model, technical specifications, color, equipment and accessories without prior notice.



**Standard Features & Accessories**

- ✓ Heavy Duty Steel Base Frame
- ✓ Integral Fuel Tank
- ✓ Fuel Drain Plug
- ✓ Control Panel Window
- ✓ Engine Jacket Water Heater
- ✓ Battery and Battery Rack
- ✓ Battery Charger
- ✓ Radiator fill cap on enclosure
- ✓ Anti Vibration Pads between Engine/Alternator & Base Frame
- ✓ Residential Grade Silencer Inside Enclosure
- ✓ Industrial Grade Silencer Set for Open Skid Sets
- ✓ Sound Absorb Foam for Enclosure
- ✓ Air Inlet & Outlet Rodent Guards
- ✓ Oil Drain Valve
- ✓ Coolant Drain Valve
- ✓ Flex Fuel Lines
- ✓ Air Filter Restriction Gauge
- ✓ Engine Manifold Cover
- ✓ Turbocharger Cover
- ✓ Protection Covers for Rotating Parts
- ✓ Exhaust Insulation Cover
- ✓ Control Panel Window
- ✓ Operations Manual
- ✓ 24 Months / 2000 hours Limited Standby Warranty

**Optional Accessories**

- Main Line CB (3 / 4 Poles)
- PMG
- Voltage Regulation  $\pm 0.5\%$  w/MX321 AVR
- Anti-condensation Heater
- Double Wall Base Fuel Tank
- Fuel Level Display & Alarm on Controller
- Low / High Fuel Alarms
- Fuel Water Separator Filter
- Auto Fuel Fill Control System
- Oil Temperature Display on Controller
- Manual Speed Adjust Rheostat
- Manual Voltage Adjust Rheostat
- Remote Annunciator Panel
- Remote Control & Monitoring Panel
- Advanced SMS Messaging
- Control Panel Heater
- Battery Disconnect Switch
- Battery Heater
- 10A Battery Charger
- Battery Charge Ammeter
- Tool Kit for Maintenance
- Power Plug Outlet Kit
- Automatic Transfer Panel (ATS) – Contactor Design
- Automatic Transfer Panel (ATS) – Changeover Design

\*Manufacturer reserves the right to make changes in model, technical specifications, color, equipment and accessories without prior notice.

**Aksa Power Generation USA**  
 371 Exchange Street, West Monroe, LA 71292  
 T: + 1 318 8558377  
 sales@aksausa.com

**Aksa Power Generation  
 USA & LATAM**  
 a member of



**KAZANCI HOLDING**

**Aksa Power Generation LATAM**  
 12320 NW 116<sup>th</sup> Street, Miami, FL 33178  
 T: + 1 786 4936857  
 sales@aksausa.com